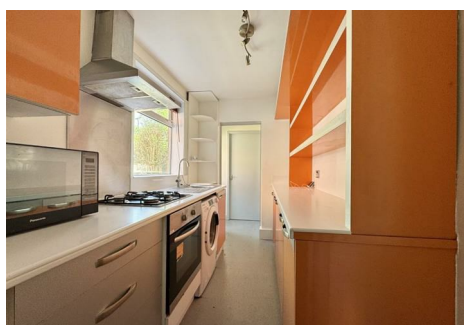




RE/MAX
Elite



20 Drayton Road, Smethwick, B66 4AJ
£1,200 Per month

AVAILABLE NOW* *OPEN HOUSE WEDNESDAY 6TH MAY AT 5.30PM

Well presented two bedroom mid-terrace house in a popular location in Bearwood close to local amenities and transport links.

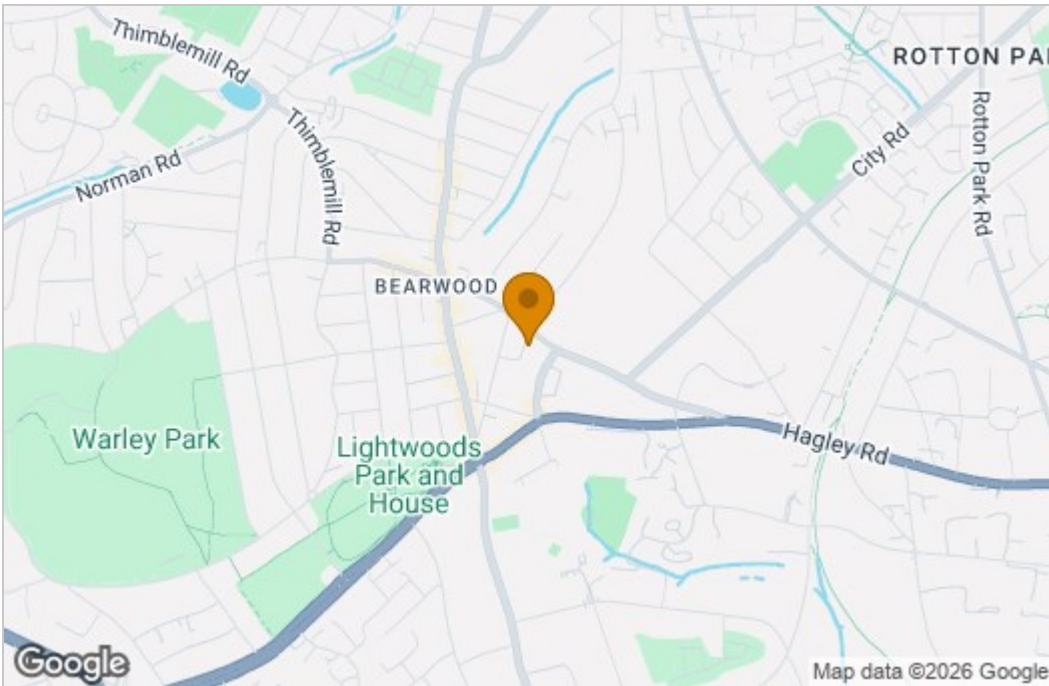
The property will be unfurnished and briefly comprises of two reception rooms, fitted kitchen, two double bedrooms with the master having an en-suite and a ground floor family bathroom.

The property also benefits from having a rear garden.

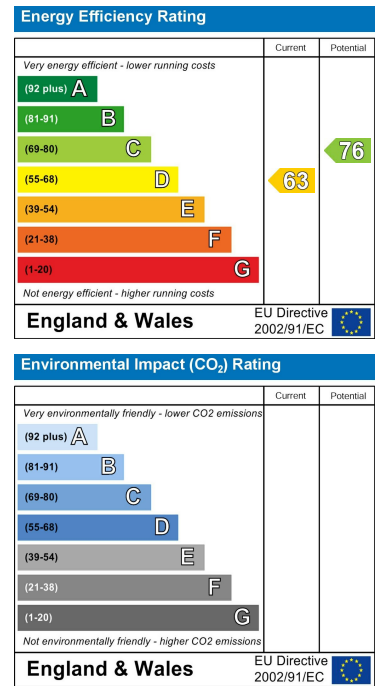
Please call or email to book in a viewing!

Floor Plan

Area Map



Energy Efficiency Graph



These particulars, whilst believed to be accurate are set out as a general outline only for guidance and do not constitute any part of an offer or contract. Intending purchasers should not rely on them as statements of representation of fact, but must satisfy themselves by inspection or otherwise as to their accuracy. No person in this firm's employment has the authority to make or give any representation or warranty in respect of the property.